

MANAGED
WORKSPACE
OPPORTUNITY



Bloomsbury
Place, WC1A

SELF-CONTAINED
TOWNHOUSE
4,358 SQ. FT

REDEFINING THE
TRADITIONAL

REIMAGINED WORKSPACE

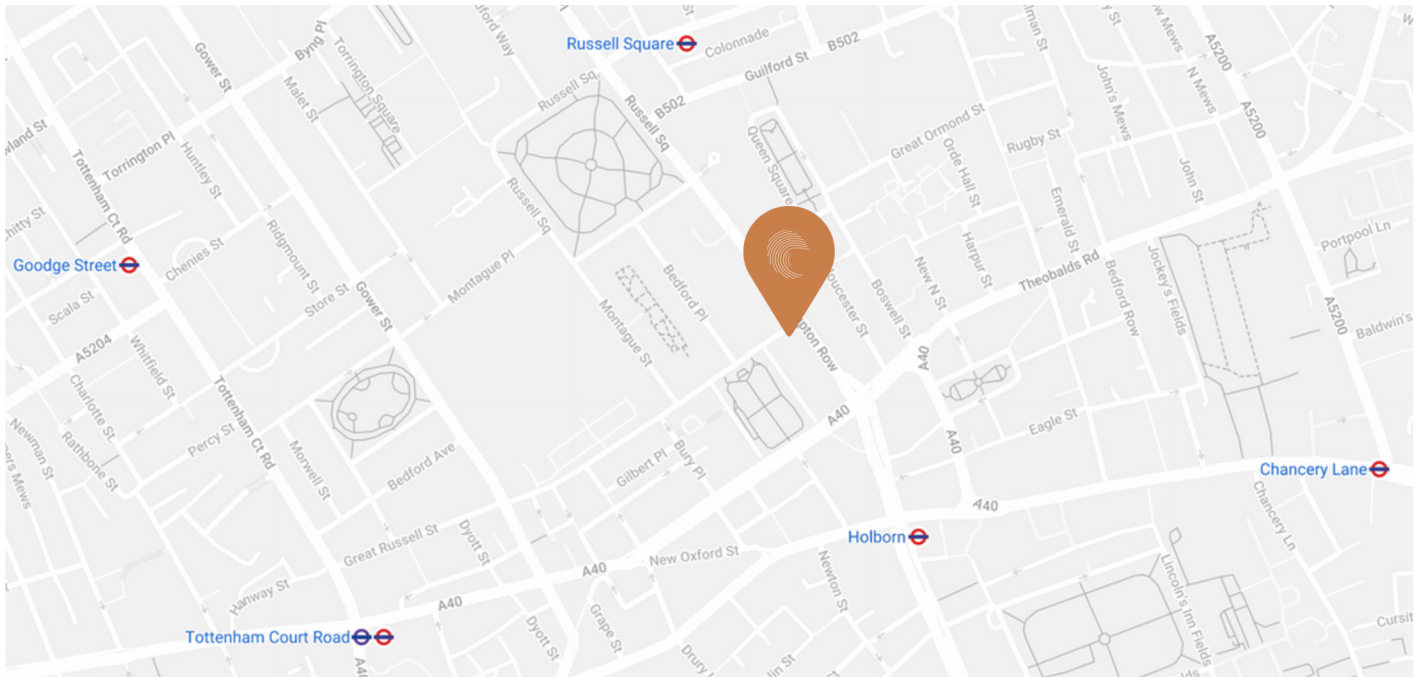
Bloomsbury Place offers your business flexibility of term, service and cost under a managed office structure of your choosing. Giving access to your own building and a host of unique amenities in a wonderful self-contained townhouse in Bloomsbury with a roof terrace and private courtyard

BUILDING LOCATION



Location

4 Bloomsbury Place
London
WC1A 2QA



Bloomsbury Place is located on the northern terrace of Bloomsbury Square, near to the corner of Southampton Row. With the delights of Midtown on your doorstep, such as The British Museum, well-known restaurants, and Theatres, the building is in a superb location and within walking distance of Holborn and Russell Square Underground Lines.

OFFICE AMENITIES



Air Conditioning



Kitchen Areas



Lockers



Roof Terrace & Courtyard



Showers & Changing
Facilities



24/7 Access



Meeting Rooms



Bike Storage



Existing Fit Out



Good Natural Light

Design your space reflecting you
and your business in an
attractive property.

WHAT CAN BE INCLUDED AT YOUR CHOICE



Location

4 Bloomsbury Place
London
WC1A 2QA

PROPERTY EXPENDITURE

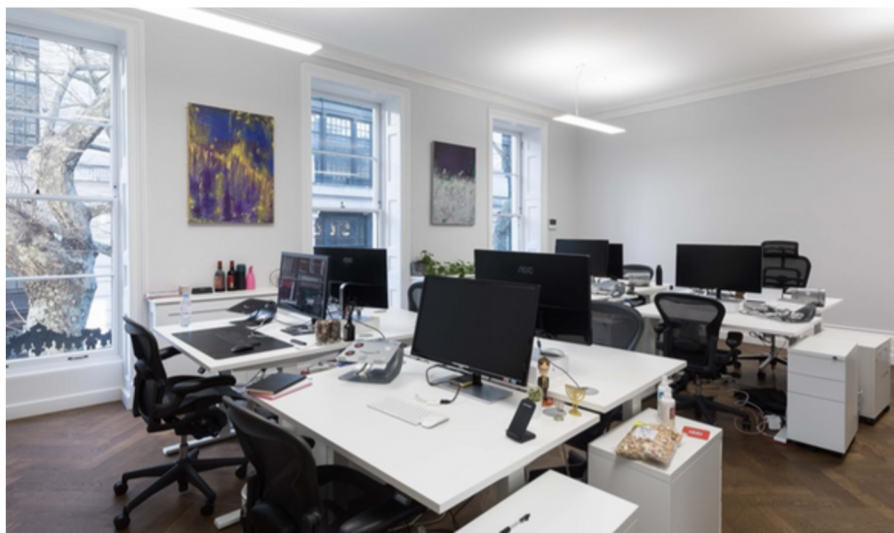
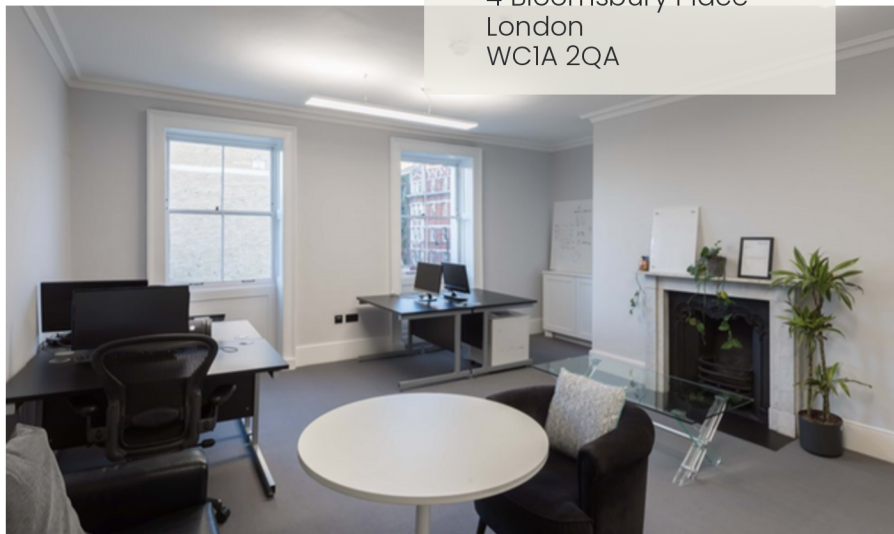
Rent
Rates
Service Charges
Insurances

CAPITAL EXPENDITURE

Building Surveys
Design & Fit-Out Works*
Furniture Fixtures & Fittings
Stamp Duty Land Tax
Legal Fees & Property Searches
Acquisition Fees

OPERATIONAL EXPENDITURE

Utilities
Cleaning & Waste Disposal
Facilities Management
Repairs & Maintenance
Health & Safety & Compliance
Security
IT Connectivity

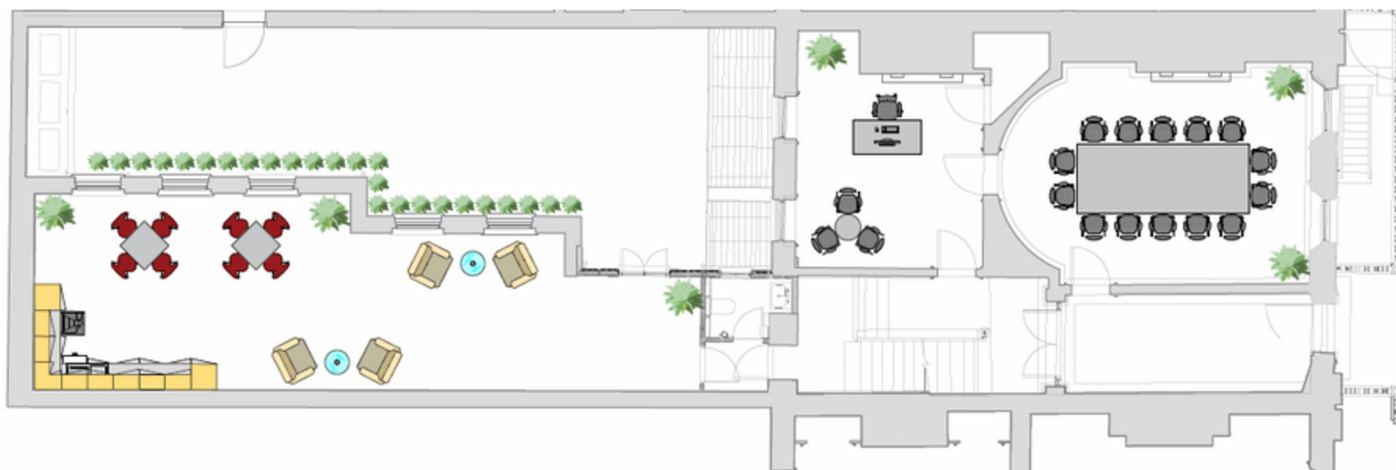


*To a Pre-Agreed Value

PRICING

PER SQ. FT
FROM **£129**

LICENCE FEE PCM
FROM **£46,500 + VAT**



Ground Floor showing, Boardroom, Reception, Kitchen Breakout and outside Courtyard

The logo consists of a series of white concentric arcs on the left, resembling a stylized fingerprint or a signal, followed by the word "IDENTITY" in a large, white, serif font, and the word "workspace" in a smaller, white, lowercase sans-serif font below it.

IDENTITY

workspace

FOR ENQUIRIES
CONTACT US

Telephone: 020 3988 8930

Email: enquiry@identityworkspace.com

Web: www.identityworkspace.com



Uniquely yours, managed by us